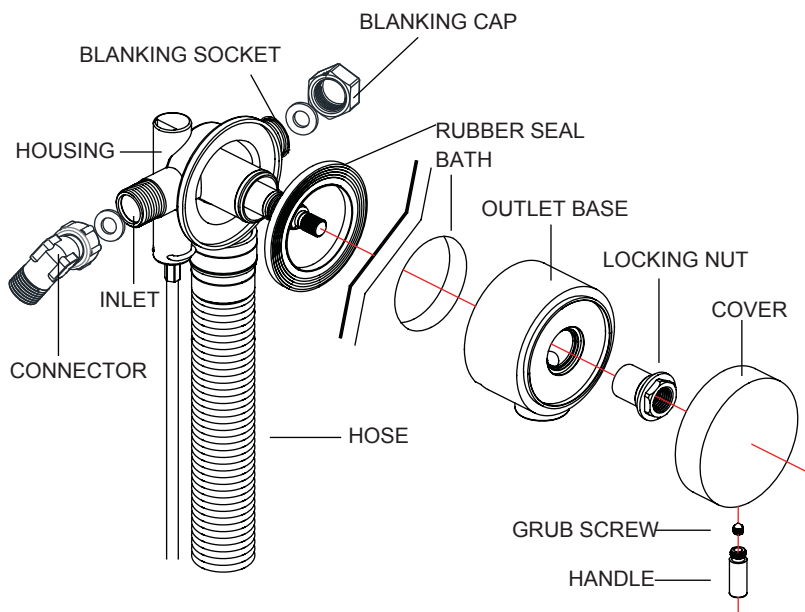


40044440085
40044440090

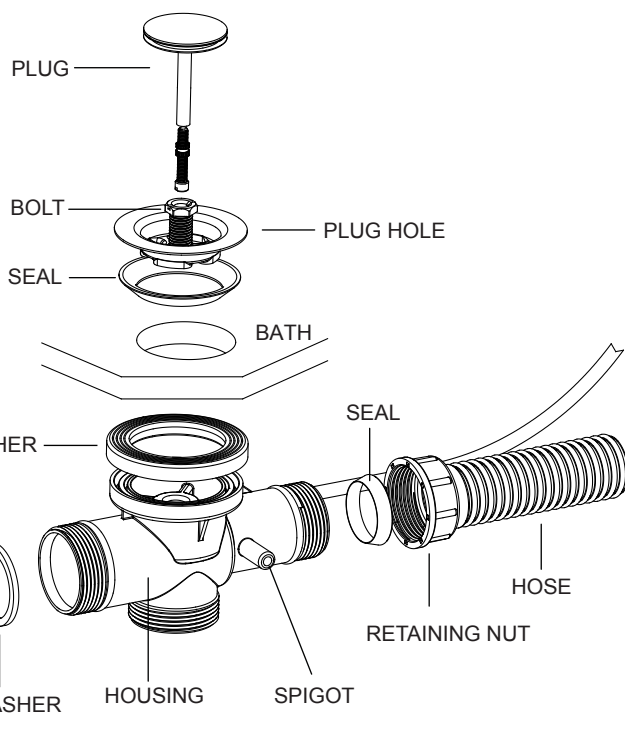
MyPrice SINGLE ENDED BATH FILLER AND POP UP BFW0361C
MyPrice DOUBLE ENDED BATH FILLER AND POP UP BFW0362C



TO INSTALL: Filler Section

Locate the rubber seal onto the housing and hold the unit in position from the outside of the bath. Now push the assembly through the overflow hole of the bath and from the inside of the bath place the outlet base over the 'O' ring on the assembly. Push tight until there is resistance and then screw the locking nut, fully tightened so the outlet base is centred to the overflow hole in the bath. Push the cover onto the spline of the housing and fix it by tightening the grub screw. Finally put on the handle.

For the water to supply the unit, connect a mixed supply of water to one outlet only and to both inlets for single Hot and Cold supplies. The blanking cap must be removed prior to the second inlet being used.



TO INSTALL: Waste Section

Push the rubber seal into the waste hole of the bath (see detail), then carefully align the housing centrally under the bath.

From inside the bath place the waste surround in position on the seal, and then screw the centre bolt into the male thread within the housing **(use the small bolt for bath thicknesses up to 9mm and the large bolt for thicknesses from 9mm to 18mm)**. Place the plug into the hole. To adjust the plug release the nut, screw/unscrew the bolt until the required position is obtained, re-tighten the nut.

The Overflow pipe should be assembled as illustrated, ensuring the retaining nut and washer are secure and no leaks visible.

Before the waste is commissioned it is essential to check all seals and joins for any leaks.