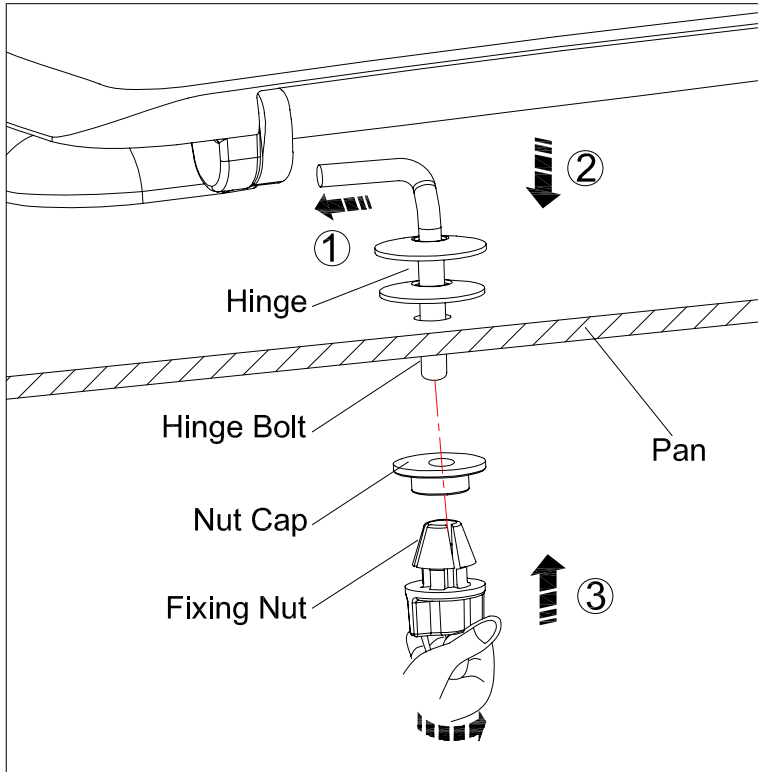


## UNIVERSAL WHITE UREA WC SEAT INSTALLATION INSTRUCTIONS



### Installation:

- ① Insert the hinges into the seat.
- ② Insert the hinges with toilet seat through the pan fixing holes as shown.
- ③ Secure the seat to the pan by attaching the nut cap and fixing nut to the hinge bolt. Access is required from the underside of the pan.

### Cleaning

Only use water and a mild detergent or soap to clean the seat. Never use scouring agents, abrasive surfaces, bleaching or acidic agents on the seat or the hinges.

The seat has been designed for normal domestic use (not commercial use). The seat may malfunction if excessive weight is placed on it - don't stand on the seat.