

Waterproof, flexible protective coating

Lastogum X[®]

Under ceramic coverings in showers and bathrooms

With official test certificates.

Fields of application

- Liquid area waterproofing to be applied by roller, brush or trowel.
- For indoor use.
- For walls and floors.
- For moisture-resistance grade I and II in accordance with the ZDB leaflet "Notes for the application of waterproofings directly under tiles for indoor and outdoor use".
- Resistance class A1 in accordance with the test principles to issue an official test certificate.
- For wet areas not exposed to pressurised water, such as bathrooms, showers in residential buildings, hotels, old people's homes and hospitals.
- On moisture-sensitive, absorptive substrates, e.g. plasters, plaster slabs, gypsum fibre boards, plaster boards, plywood, anhydrite screeds in moist and wet areas subject to usual domestic use.
- On absorptive mineral substrates, e.g. concrete, screed, render, aerated concrete, cementitious levelling compounds for walls such as PCI Polycrret 5 and/or PCI-Polycrret 20 and self-levelling compounds, e.g. Periplan

Features and Benefits

- **Waterproof**, protects moisture-sensitive substrates.
- **Deformable**, compensates tensions, deformations of the substrate, fluctuations in temperature and vibrations.
- **Crack-bridging**, high reliability even with subsequent cracks in the substrate.
- **Ready-to-use**, easy to apply by roller, brush or trowel.
- **Resistant to lime water**, ensures bonding between protective coating and mortar if the adhesive bed is constantly submerged in water.
- **Solvent-free**, ecologically harmless, can be used without any risk to health.
- **With official Test Certificate by the Technical University of Munich** for interior waterproofing under PCI-Tilefast 6 in accordance with the ZDB leaflet.

TECHNICAL DATA

Material

Material base	solvent-free synthetic resin dispersion
Components	1-part
Density approx.	1.5 g/cm ³
Colour	Grey
Marking according to	
- Ordinance on Hazardous Goods /Road	non hazardous
- Ordinance on Hazardous Substances	not subject to marking
<i>For further information refer to paragraph Safety</i>	
Packaging	8 kg Lastogum X
PCI-Lastogum X Kit	1 ltr Primer G Pecitape (10 m) and 2 wall gaskets
PCI-Lastogum X	8 kg plastic pail 15 kg plastic pail
Storage	cool and dry, but frost-free
Shelf life	approx. 12 months

TECHNICAL DATA

Application

Consumption with 2 coats:	
- moisture-resistance class I (acc. to the ZdB leaflet and/or resistance class A1 acc. to test principles)	approx. 1 to 1.2 kg/m ² (• approx. 0.75 l/m ²)
- moisture-resistance class II (acc. to ZdB leaflet)	approx. 1.5 kg/m ² (• approx. 1.0 l/m ²)
Thickness of wet film	
First and second coat:	min. 0.4 mm each
Coverage	8 kg pail is sufficient for approx. 15 kg pail is sufficient for approx.
- for one coat (applied by roller, brush or trowel)	16 m ² 30 m ²
- for two coats (applied by roller, brush or trowel)	8 m ² 15 m ²
Working temperature	+5°C to +30°C (substrate temperature)
Evaporation time after first coat*	approx. 1 hour
Evaporation time after second coat* ready for subsequent tiling	approx. 1 to 2 hours
Minimum consumption for two coats	approx. 1 to 1.2 kg/m ²

*At +23°C and 50% relative humidity. Higher temperatures reduce and lower temperatures increase these times.

SUBSTRATE PREPARATION

The substrate must be solid, dry (cementitious screed 4%, anhydrite pourable screed 0.5%, measured with the CM meter), clean and free from oil, grease and other residues which should be removed by sand-blasting, brushing or shot-blasting (Blastac) if necessary. The basically smooth surface must not have any pockets, gaping cracks or ridges. Prime gypsum-based substrates and plaster boards beforehand with undiluted Primer G. Absorptive mineral substrates are to be primed with Primer G, diluted 1 : 1 with water. Prime dry, tightened chipboards with Primer W. The primers must be cured prior to the application of PCI-Lastogum X.

APPLICATION

1. Apply undiluted PCI-Lastogum X by roller (lambskin roller), brush (wall brush, float), or trowel to the substrate to cover the entire area.
2. Place PCI-waterproofing gasket (wall) and/or PCI-waterproofing gasket (floor) over pipe culverts and floor drains, PCI Pecitape in corner joints and floor/wall junctions to be integrated in the first coat of PCI Lastogum. Any projecting edges of the fabric are covered by the second coat.
3. After the first coat is dry approx. 2 - 3 hours apply the second coat.
4. After curing, typically 24 hours, with PCI-Tilefast 6 Flex or PCI Tilefast 6-Rapidflex over PCI Lastogum X on vertical and horizontal areas.



1. Priming: Prime absorptive mineral gypsum-based substrates and plaster boards with Primer G.



2. Apply undiluted PCI-Lastogum X to the substrate as a first protective coating to cover its entire surface.



3. Fit the PCI-waterproofing Pecitape with PCI-Lastogum X in corner joints and floor/wall junctions.



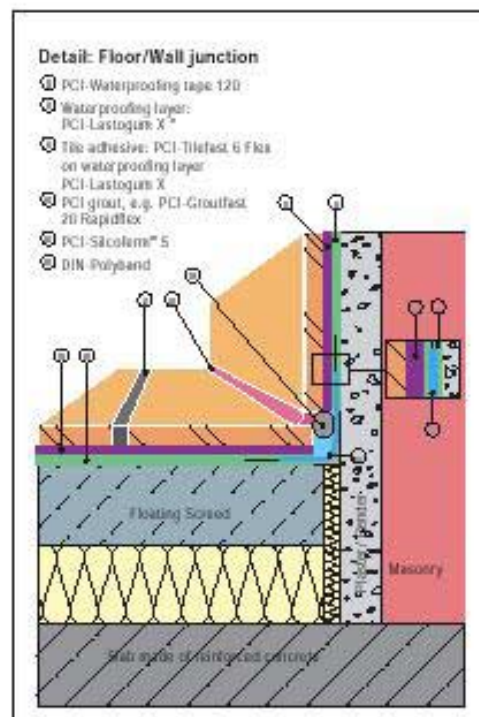
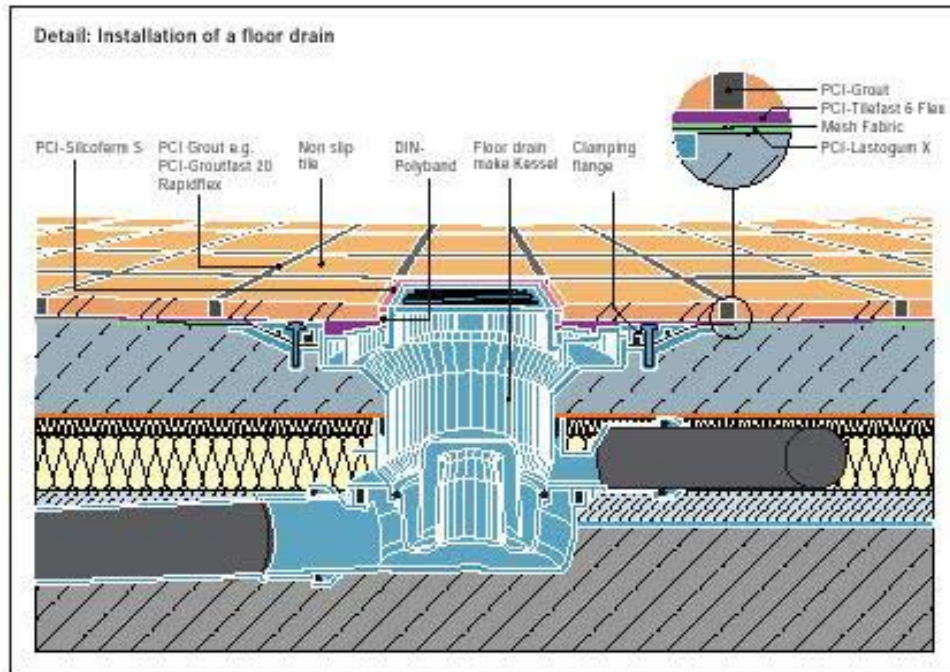
4. Place PCI-waterproofing gasket (wall) over the pipe connection protruding from the wall and cover with PCI-Lastogum X.

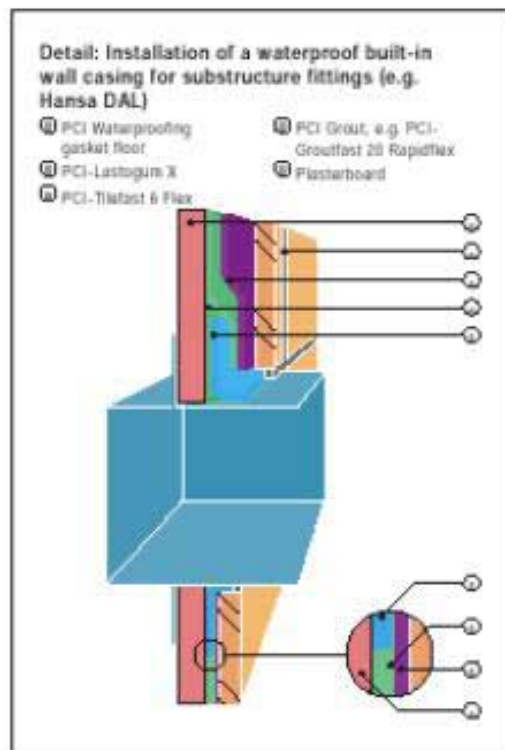
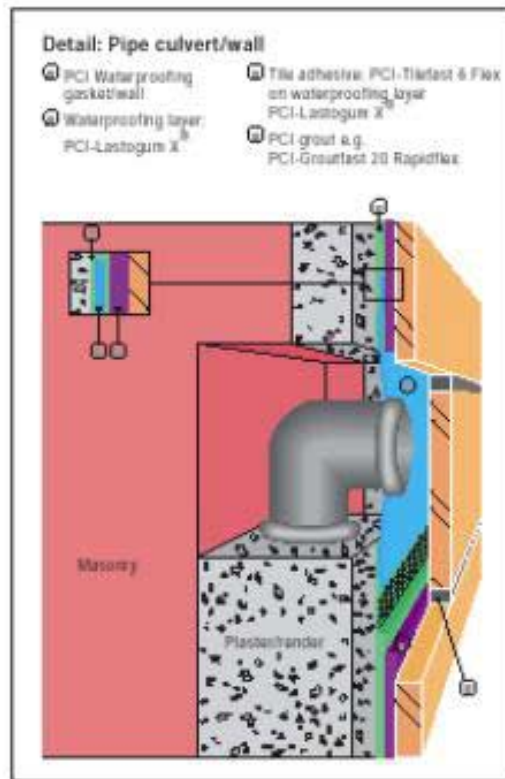


5. After an evaporation time of 2-3 hours apply the second protective coating with PCI-Lastogum X.



6. After the waterproofing PCI Lastogum X is dry tiles can be laid with PCI-Tilefast 6 Flex or Rapidflex.







The Chemical Company

PLEASE NOTE

- PCI-Lastogum X is not recommended for outdoor use and waterproofing in swimming pools. For these purposes use the crack-bridging waterproofing slurry PCI-Seccoral 2K.
- Do not apply PCI-Lastogum X at substrate temperatures below +5°C and above +30°C.
- Apply plaster and screed to cover the entire surface even around bathtubs.
- The protective coating can be exposed to foot traffic after 2 hours at the earliest when applying two coats.
- Fixtures should be integrated into the waterproof protective coating PCI-Lastogum X by means of the PCI-waterproofing gasket .
- The PCI waterproofing gasket (wall) must waterproof around the pipe (not around the plug which will be removed later), otherwise the pipe must be extended beyond the waterproof area by inserting a spacer.
- Tools should be washed with water immediately after use. Once the product has cured it can only be removed by mechanical means.
- Shelf life: approx. 12 months if stored in a cool and dry, but frost-free location.

SAFETY

General information on dispersion products

Do not allow dispersion to dry on the skin. Remove dried dispersion with soap and water. Protect eyes if there is risk of splashing. In case of eye contact, thoroughly flush with water. If the eye irritation does not ease off within a few minutes, get prompt medical attention.

For further information refer to the PCI Material, Safety Data Sheet.

BASF Construction Chemicals
(UK) Ltd
Albany House, Swinton Hall Road,
Swinton, Manchester,
M27 4DT, England.
Tel: + 44 (0) 161 794 7411
Fax: + 44 (0) 161 727 8547
E-mail: pci.uk@basf.com

In view of widely varying site conditions this data sheet is meant to provide general application guidelines only. Any recommendation or information issued by us constitutes a preliminary and accessory contractual obligation only. Users must satisfy themselves regarding the applicability of the content to their own particular requirements. Please contact our Advisory Service for special requirements. Liability is accepted for incomplete or incorrect particulars in our information material only in the event of intent or gross negligence, without prejudice to claims under product liability laws. All transactions are subject to our Terms of Sale and Supply. Any subsequent publication supersedes this edition. **Edition December 2006.**

PCI
Für Bau-Profis