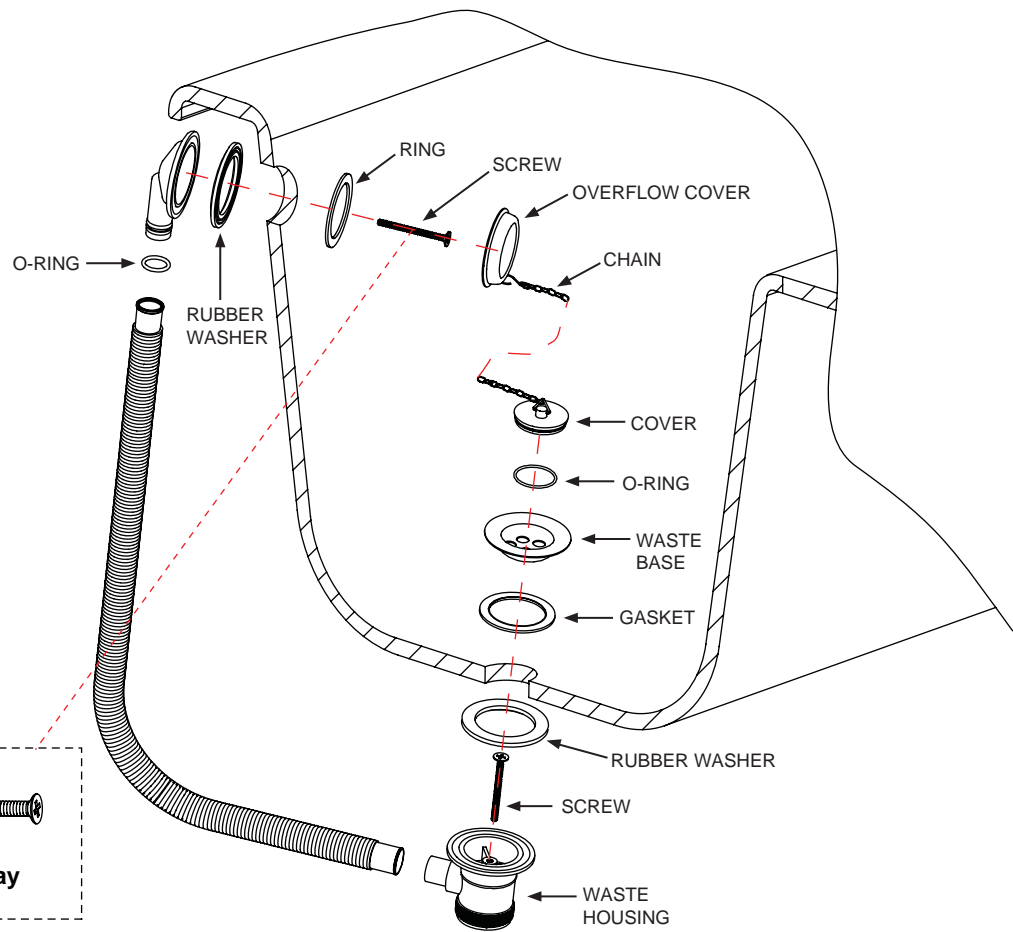


BATH WASTE WITH PLUG AND CHAIN CHROME

41500080100



Installation

1. Remove the screw from waste part.
2. Put the waste base and gasket into the bottom waste hole of bath. Place the rubber washer and waste housing onto the waste from the backside of bath in sequence.
3. Tighten all the above elements together with the waste screw.
4. Take off the screw from the overflow part.
5. Put the gasket into overflow housing. Then hold this unit in position from the backside of the bath.
6. Place the following items onto the overflow housing in sequence: overflow cover , ceramic annulus and overflow base.
7. Tighten all the items together with the overflow screw.

Maintenance

We do NOT recommend you use any household cleaners to clean the product. The product should only be cleaned with soapy water, rinsed with clean water, and dried with a soft cloth.

INSTALLATION INSTRUCTIONS



For any further information please contact Bathstore on: **0845 873 8843**

Or visit our web-site at www.bathstore.com
The manufacturer reserves the right to make technical modifications without prior notice.