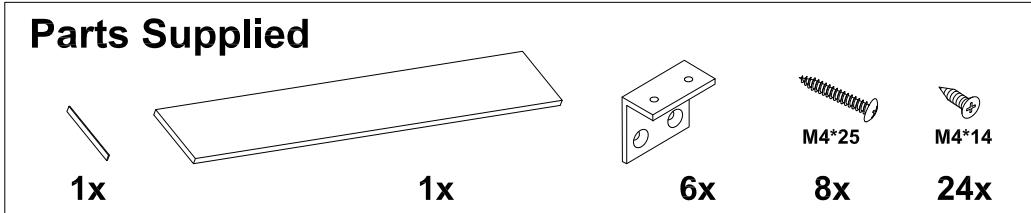


# MyPlan 2400 Countertop Instructions

41405010935  
41405011175  
41405011415

- White units have protective film on the front and side panels, please remove this film after installation.

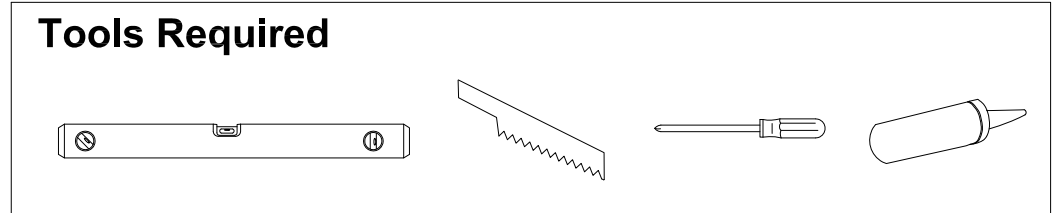
### Parts Supplied



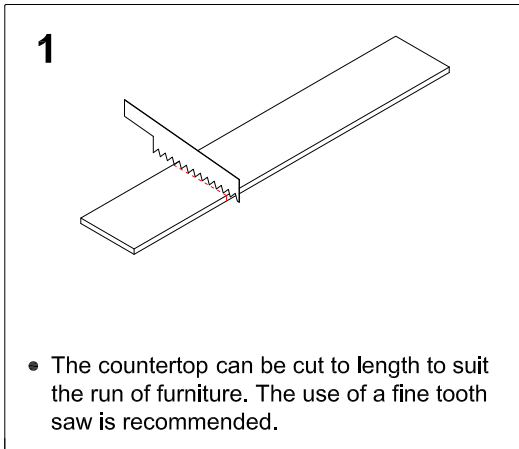
1x                      1x                      6x                      8x                      24x

M4\*25                      M4\*14

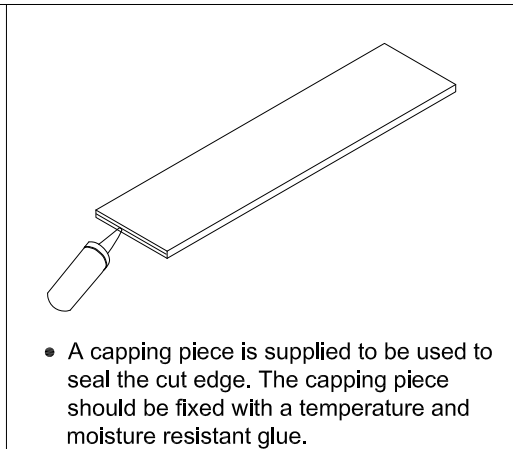
### Tools Required



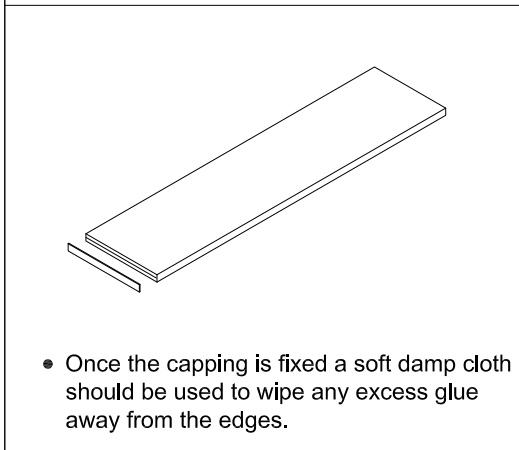
### 1



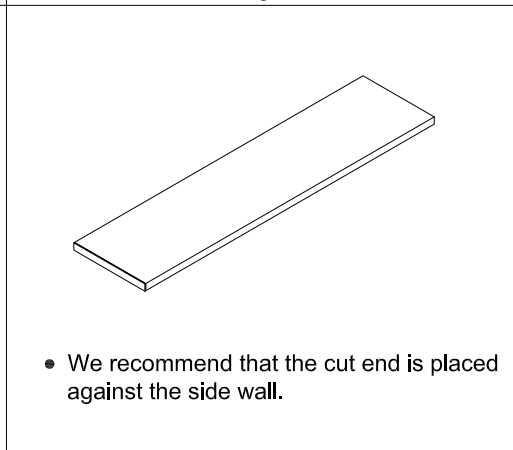
- The countertop can be cut to length to suit the run of furniture. The use of a fine tooth saw is recommended.



- A capping piece is supplied to be used to seal the cut edge. The capping piece should be fixed with a temperature and moisture resistant glue.

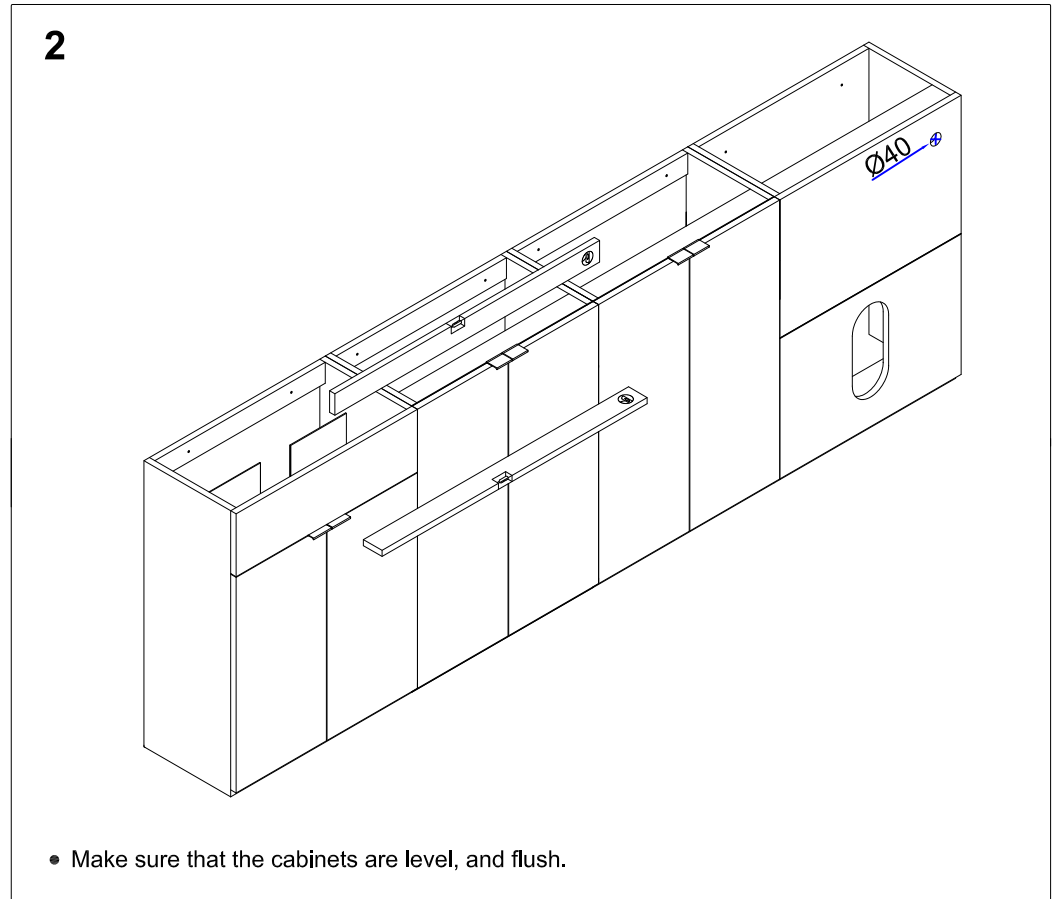


- Once the capping is fixed a soft damp cloth should be used to wipe any excess glue away from the edges.



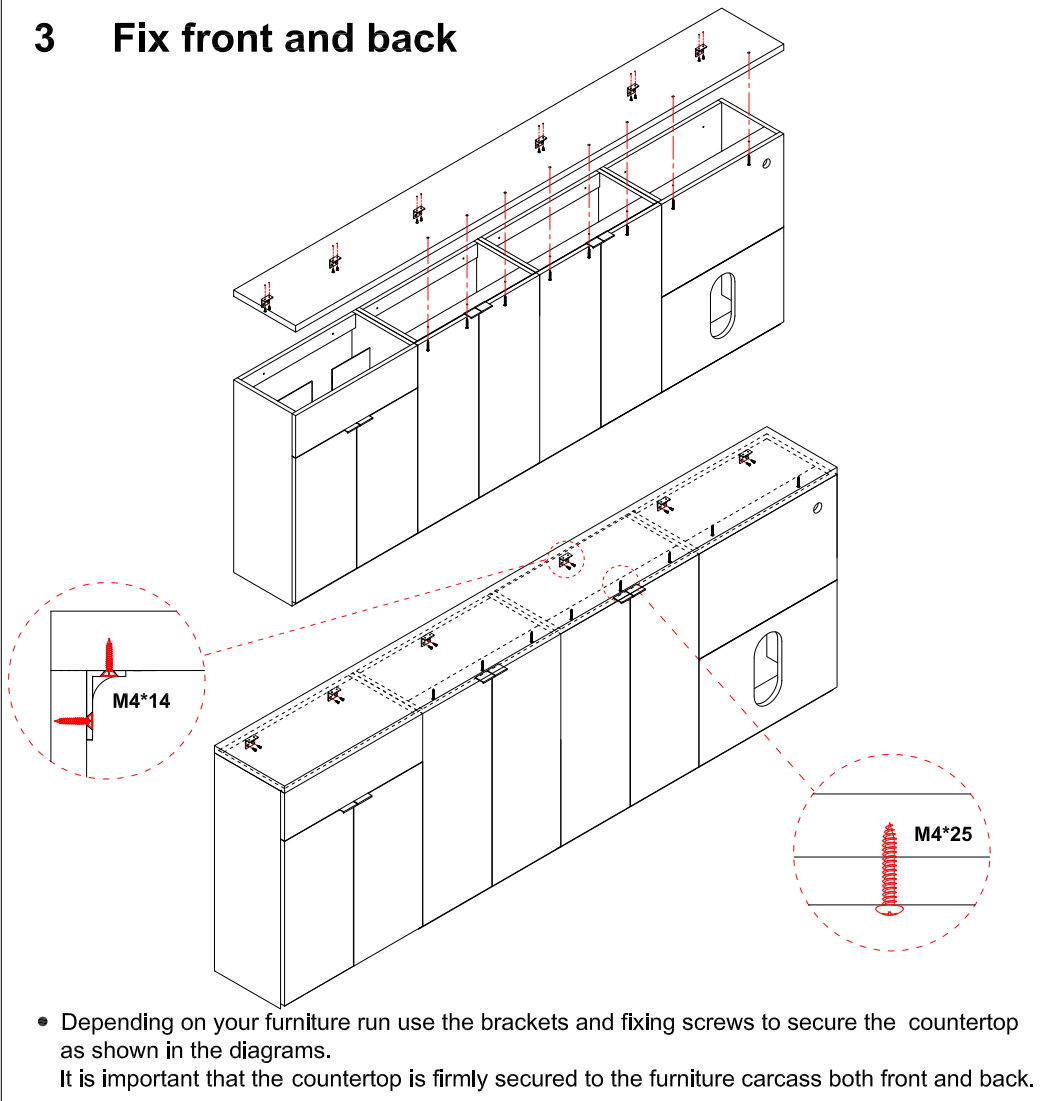
- We recommend that the cut end is placed against the side wall.

### 2

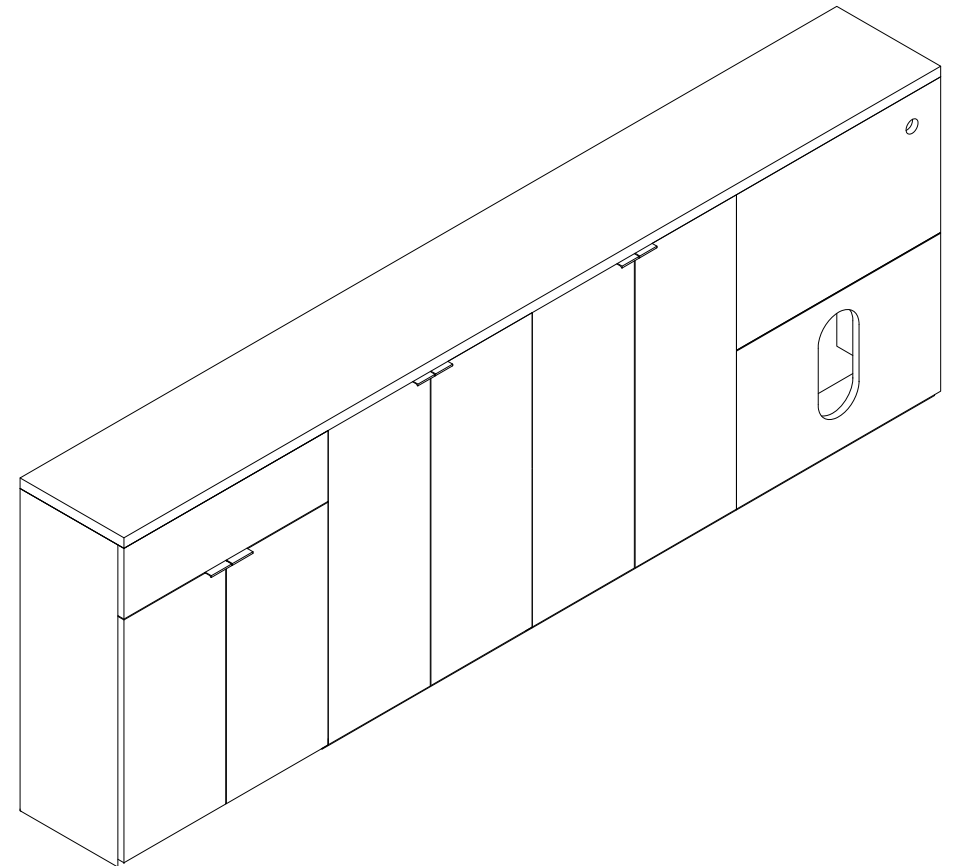


- Make sure that the cabinets are level, and flush.

### 3 Fix front and back



### 4



## Care and Maintenance

### Please leave with the householder

This furniture is made of wood, and has a water resistant finish. It should not be left wet. The quality of the finish is best maintained if it is wiped with a dry cloth after use. It should only be cleaned using a soft damp cloth followed by a dry cloth. Do not use bleach or any abrasive cleaner.